

+ The RENASYS[®] range of Drain Kits give you the flexibility to tailor your therapy to meet the needs of your patients

RENASYS Drain Dressing Kits are offered for experienced clinicians who wish to enhance the treatment regime of complex wound shapes and depths, locations, and challenging exudate conditions

Indications

RENASYS Drain Dressing Kits are intended to be used in conjunction with Smith+Nephew negative pressure wound therapy systems (NPWT).

The Smith+Nephew RENASYS NPWT System is indicated for patients who would benefit from a suction device (negative pressure wound therapy), as it may promote wound healing via removal of fluids, including irrigation and body fluids, wound exudates and infectious materials.

Appropriate wound types include:

- Chronic
- Acute
- Traumatic
- Sub-acute and dehisced wounds
- Ulcers (such as pressure or diabetic)
- Partial-thickness burns
- Flaps and grafts for necrotic or sloughy wounds

Contraindications

The use of NPWT and the RENASYS Drain Kits is contraindicated in the presence of:

- Untreated osteomyelitis
- Exposed arteries, veins, organs or nerves
- Necrotic tissue with eschar present
- Malignancy in wound (with exception of palliative care to enhance quality of life)
- Non-enteric and unexplored fistulas
- Anastomotic sites

Always consult the Instructions for Use (IFU) for your RENASYS Dressing Kit and pump prior to application or the full list of warnings and precautions for the RENASYS NPWT System

Application

1. Clean and debride

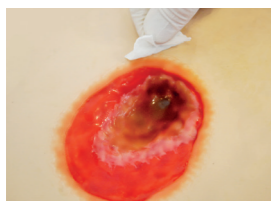
Use clean or aseptic techniques for application, according to your institutional protocol. Thorough wound cleansing should occur with each dressing change.



1. Debride any devitalized or necrotic eschar tissue. Cleanse the wound and pat dry.



3. If desired, a non-adherent wound contact layer may be applied. Trim a single layer of non-adherent gauze and lay across the wound bed.

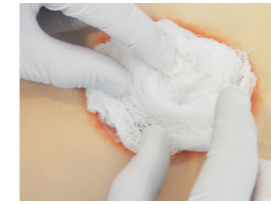


2. If desired, protect the periwound skin from exposure to moisture and adhesive through the use of a skin sealant. Allow the skin sealant to dry fully prior to placement of the transparent film.

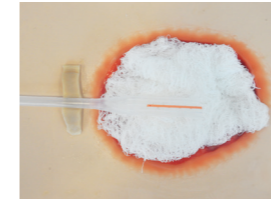
2. Place drain and dress wound with gauze



1. Cut the drain approximately 2.5cm shorter than the base of the wound. Curl the drain if using a channel or round drain.



2. Apply a layer of saline moistened gauze to wound bed and position drain in top of gauze. For a channel drain, wrap a layer of gauze around drain.



Note: If placing directly into a sinus tract, no gauze is necessary on the portion of the drain in the tract.

Warning: Drain channels must be contained within the wound bed to achieve a seal.



3. Apply a strip of ostomy paste to the wound edge to secure the drain in position; place the remainder over the top of the drain and pinch in place.

Continue to apply gauze in layers, until the gauze loosely fills the entire wound cavity. Avoid over packing the wound.

3. Seal the wound



1. While holding the transparent film, expose one side of the adhesive backing by removing a single panel, and apply over the wound.



3. Create a seal by pinching the ostomy paste. Secure the drain tubing with waterproof tape.



2. Cover the wound filler with transparent film, removing the remaining adhesive panels to seal, then the top stabilization panel.

Note: Film should extend at least 5cm beyond wound margin and be securely anchored to periwound area to maintain a good seal.

Overlap the edges of the transparent film by a minimum of 7.5cm when using multiple pieces of transparent film.

Initiate therapy

1. Connect the drain to the RENASYS quick click adapter. The quick click adaptor is then connected to the canister tubing. An audible click indicates the connections are secure.
2. Activate the RENASYS pump and ensure that it is operating at the prescribed therapy level. The recommended therapeutic pressure range is -40 to -120mmHg. The vacuum level is a decision each healthcare provider must make, based on an individual assessment of the particular wound.

Lower levels of vacuum are generally effective and more tolerable. The vacuum level should never be painful.

If the patient reports discomfort with the vacuum level, it can be reduced.

3. Finished dressings should be fully compressed, firm to the touch and leak-free.

Initiate therapy

1. Gauze dressings should be changed 48 hours after the initial application of therapy. If no leak is present and the patient is comfortable, dressing changes should occur 2–3 times per week.
2. In the event of heavy or viscous drainage or drainage with sediment, or when blood is present, regular monitoring and more frequent dressing changes may be needed.
3. Ensure all wound filler material placed in the wound has been removed before redressing the wound. Appropriately discard used wound dressings observing your institution's protocol for medical waste handling.
4. As with all adhesive products apply and remove the dressing carefully from sensitive or fragile skin to avoid skin stripping, especially after frequent dressing changes.
5. Check the dressing regularly. Throughout treatment, monitor the patient for any signs of local or systematic infection. Infected wounds may require more frequent dressing changes. If there are any signs of systemic infection or advancing infection at wound area, contact the treating clinician immediately.
6. If the RENASYS[◇] pump reports a blockage alarm, inspect the dressing and canister tubing for any blockages which may be manually remedied. If a blockage cannot be identified or resolved, replace the pump canister first, and then replace the dressing as necessary.

RENASYS-G Gauze Drain Dressing Kit order references

| Product | S+N code | Contents |
|--|----------|---|
| RENASYS-G Gauze 10Fr Round Drain Dressing kit | 66801255 | Kerlix™ AMD Gauze RENASYS Drain – (10Fr Round, 10mm Flat, 15Fr Channel or 19Fr Round) |
| RENASYS-G Gauze 10mm Flat Drain Dressing kit | 66801256 | RENASYS Transparent Film Dressings SECURA [◇] No Sting barrier film wipe |
| RENASYS-G Gauze 15Fr Channel Drain Dressing kit | 66801257 | RENASYS Non-adherent gauze RENASYS Quick Click Adaptor Ostomy paste |
| RENASYS-G Gauze 19Fr Round Drain Dressing kit | 66801258 | Waterproof tape Saline Wound Ruler |

All RENASYS drains are silicone and include a radiopaque strip for visualisation under x-ray

Advanced Wound Management
Smith & Nephew Medical Ltd
101 Hesse Road
Hull HU3 2BN, UK
T +44 (0) 1482 225181
F +44 (0) 1482 328326

www.smith-nephew.com

◇Trademark of Smith+Nephew
All Trademarks acknowledged
©February 2021 Smith+Nephew
AWM-AWC-28761 | GMC0334b

For detailed product information, including indications for use, contraindications, effects, precautions, warnings, and important safety information, please consult product's IFU prior to use

References

1. Henderson V, Timmons J, Hurd T, Deroo K, Maloney S, Sabo S. NPWT in everyday practice Made Easy. *Wounds International*. 2010; 1(5): 1-6.