

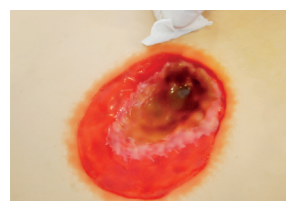
+ RENASYS[◇] Drain Dressing Kits application

Use clean or aseptic techniques for application, according to your institutional protocol.
Thorough wound cleansing should occur with each dressing change.

Clean and debride



1. Debride any devitalized or necrotic eschar tissue. Cleanse the wound and pat dry.



2. If desired, protect the periwound skin from exposure to moisture and adhesive through the use of skin sealant.



3. If desired, a non-adherent wound contact layer may be applied. Trim a layer of non-adherent gauze to fit the wound dimensions and lay across the wound bed.

Perforated foam application



4. Cut the drain approximately 2.5cm shorter than the base of the wound. Curl the drain if using a channel or round drain.



5. Apply a layer of saline-moistened gauze to the wound bed and position drain on top of gauze. For channel drain, wrap a layer of gauze around drain.

Note: If placing directly into a sinus tract, no gauze is necessary on the portion of the drain in the tract.

WARNING: Drain channels must be contained within the wound bed to achieve a seal.



6. Apply a strip of ostomy paste to the wound edge to secure the drain in position.



7. Place the remainder over the top of the drain and pinch in place.
8. Continue to apply gauze in layers, until the gauze loosely fills the entire wound cavity. Avoid over packing the wound.

Seal the wound



1. While holding the transparent film, expose one side of the adhesive backing by removing the remaining single panel and apply over the wound.

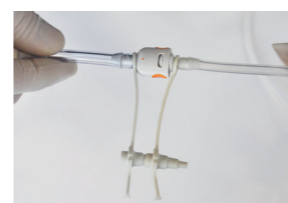


2. Cover the wound filler with transparent film, removing the remaining adhesive panels to seal, then the top stabilization panel. The film should extend at least 5cm beyond the wound margin and be securely anchored to the periwound area to maintain a good seal.

Overlap the edges of the transparent film by a minimum of 7.5cm when using multiple pieces of transparent film. The film should overlap the edges of the wound by at least 5cm to facilitate a good seal.



3. Create a seal by pinching the ostomy paste. Secure the drain tubing with waterproof tape.



4. Connect the drain to the RENASYS quick click adaptor. An audible click indicates the connection is secure.



5. Connect the canister tubing to the RENASYS quick click adaptor. An audible click indicates the connection is secure.



6. Activate the RENASYS pump and ensure that it is operating at the prescribed therapy level.

Please refer to your RENASYS pump manual for full operating instructions.



7. The finished dressing should be firm to the touch and leak-free.